



Luma 500 Series NVR
Surveillance Recorder

Owner's Guide

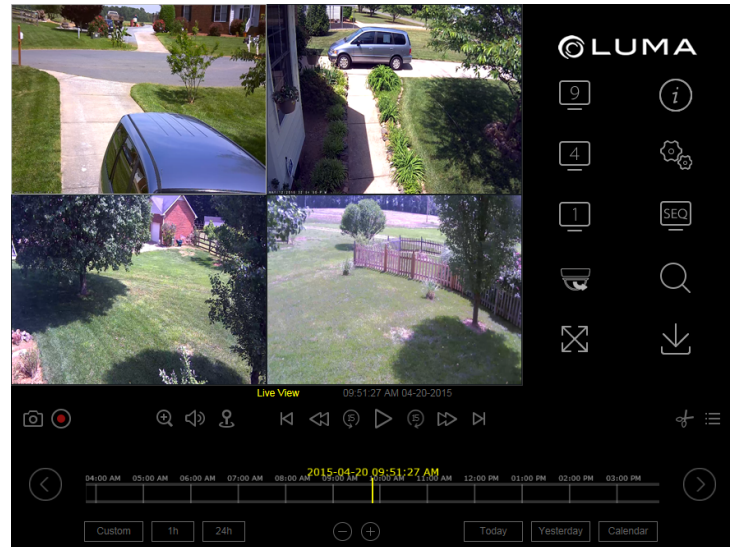
Version 151125-1457

Getting Oriented

When you first access your Luma system, you'll see the live screen, shown below. You'll see this same screen whether you are accessing your system over the Internet, or by using the mouse and monitor attached to the unit.

The live screen is your home base for surveillance.

Although it may look complicated, it is organized and easy to use. You'll only need a few controls, no matter what you are trying to do.



What Would You Like to Do?

- Take a look at the live feed. See “How to View Live Video” on page 3.
- Watch something that was recorded earlier. See “How to View Recorded Video” on page 5.
- Export a video file. See “How to Export a Video” on page 7.
- Search through the cameras’ recordings. See “Other Methods to Search and View Recordings” on page 9.

What About my Luma App?

The Luma app on your smartphone or tablet uses a different interface, and thus has a separate user’s guide.

If you do not have the Luma app, you should get it. It provides several benefits:

- It’s free.
- It’s easy to use.
- You’re never out of touch with your system.
- It’s still free.

Visit your app store for more information.

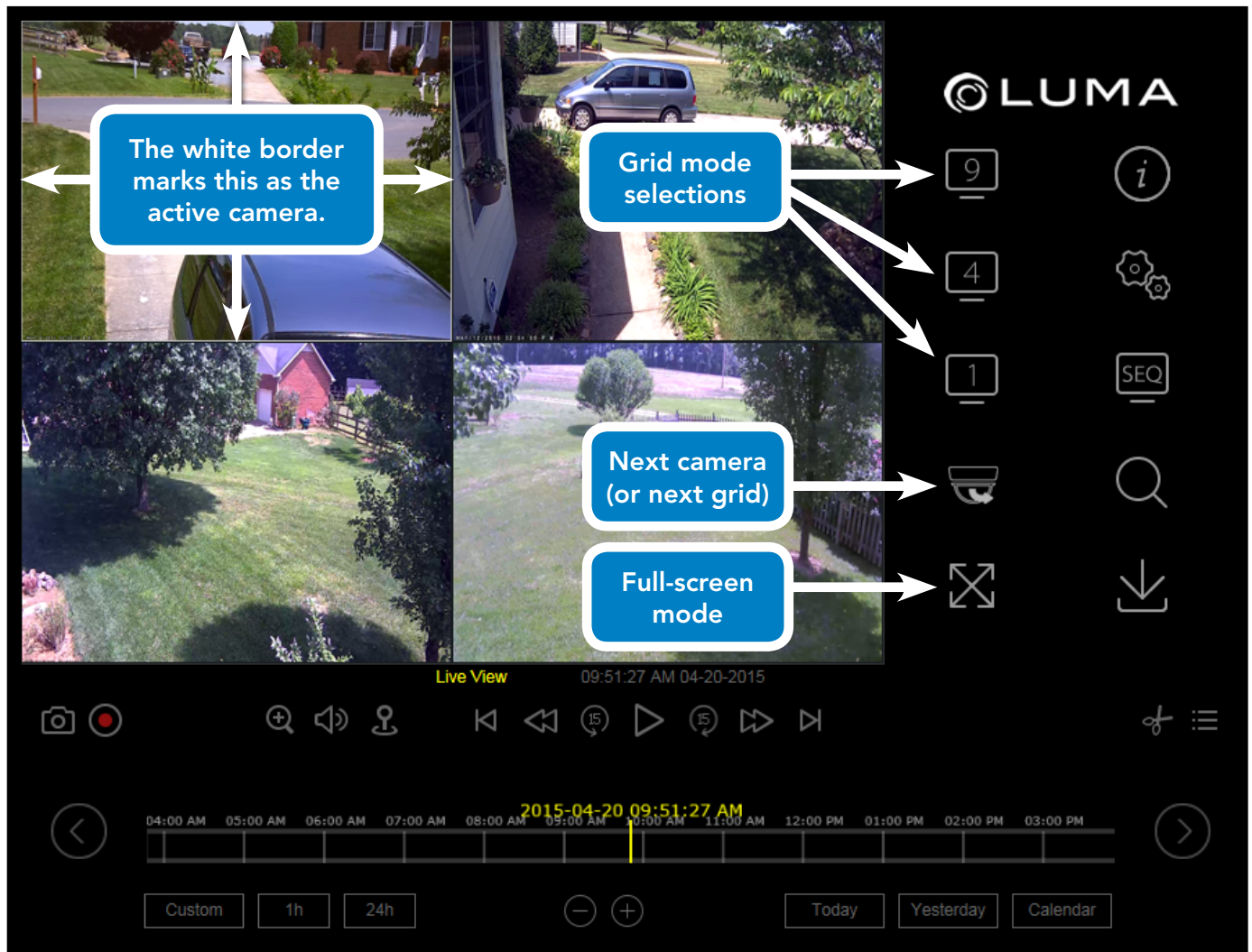
Why Aren’t All the Controls Explained?

We’ve worked to keep this guide simple.

Some of the controls provide alternate methods for doing things, others are intended for industrial use (not residential use), and still others should only be accessed by an expert. If you have further questions, please contact your installer.

How to View Live Video

The area at the top left of your screen shows the view(s) of one or more of your cameras. One of your cameras is always selected as the active camera; this camera's view has a white border all around it, as shown below. **Most of the actions you take in the live view screen affect or reference the active camera.** For example, if you click on full-screen view, the active camera's view goes full-screen.

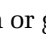



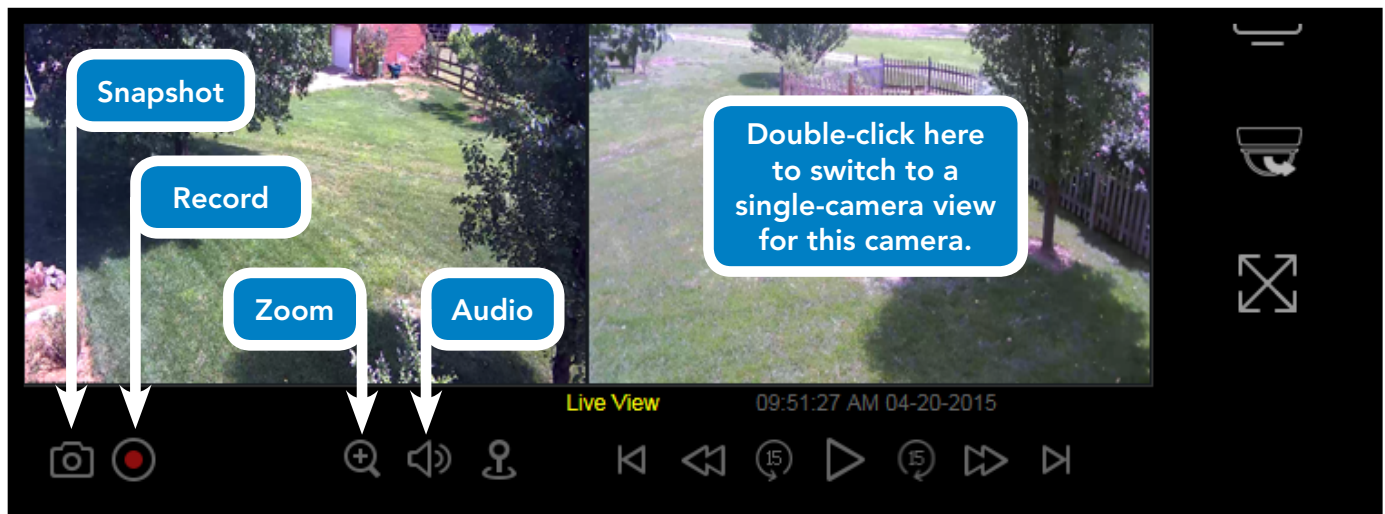
Change How Many Cameras You See

Just to the right of the camera screens, click on one of the grid buttons (*note that your recorder may not have all four of these buttons*). This changes your screen to a grid showing that number of cameras.

You can also double-click on a camera's video screen to switch to a view of just that camera. This gives you more detail. If you double-click on the single-camera view, you return to your previous grid view.

Switch to Another Camera or Grid View

The  button switches the view to the next camera or grid view, based on the numbering of the cameras (*when all cameras are visible, this button is disabled*). The  button rotates the views on a regular interval.



Go to Full-Screen Mode

Click on the icon to magnify the view area to full screen. To exit, left-click (when accessing your recorder over the Internet) or right-click (when using the mouse attached to the recorder).

Take a Photo from the Live View

Clicking the camera icon takes a screen grab of the current camera.

- If a snapshot is taken via the web interface, the system saves it to your computer in the folder specified under **Settings > Configure This Computer**.
- If taken from the recorder by using the attached mouse, the snapshot is saved onto the recorder's hard drive.

Record from the Live View

Click the button to make the active camera start recording. The icon turns blue to show you that it is recording. The camera keeps recording until you click the button again to switch it off. Be sure to click the button to stop recording before closing the browser or shutting off the recorder.

Note that the icon only shows whether the system is recording the active camera (the one with the white rectangle). If you switch to another camera, the system still records the first camera, but the icon won't show it.

Zoom In with Your Camera

Click the zoom icon below the screens to get digital zoom on your camera.

- When using the Internet, the icon turns blue, and you can click and drag a rectangle in the active camera's screen. The zoomed-in view remains active until you click the zoom icon off, or click on the camera's screen.
- When sitting at the recorder, the zoom button opens a zoomed-in view of the active camera. The camera's full screen shows in the lower right-hand corner; you can click in that window, or click and drag, to choose where to zoom in on. To leave zoom mode, right-click your mouse.

Listen to the Audio

This button lets you hear the audio from that camera, if the camera has an associated microphone.

- On the web interface, when the audio button is first clicked, a volume slider appears. While audio is active, hovering your mouse over the audio icon makes the volume slider reappear.
- On the local interface, this icon shows a slash through it when audio is not available through that camera, or is not turned on. It does not have a volume slider; use your speakers' volume control instead.

How to View Recorded Video

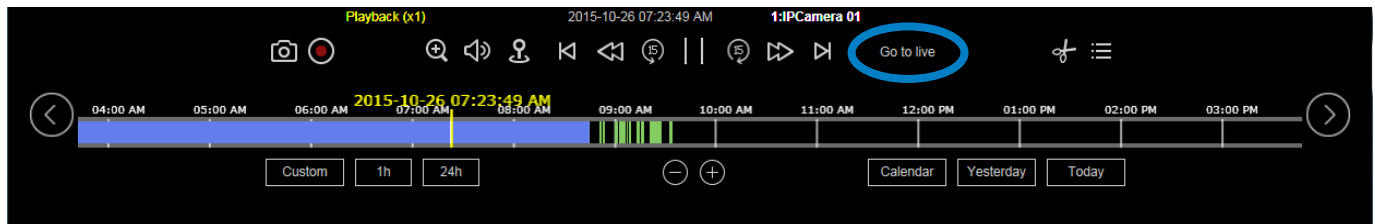
We made every effort to make viewing surveillance videos act just like viewing movies on your TV.

At the bottom of the screen, the timeline shows the recent operations of the active camera (the one outlined with the white frame).

A blue bar shows when the active camera was recording normally, either because it was scheduled for continuous recording or because a local operator recorded something manually. The green lines indicate when a camera was activated (for example, when it detects motion) to record an event.

Look at Recent Events

The timeline is divided into segments. Time stamps are shown above each division line in the timeline. Click anywhere on the timeline to begin playing the recorded file at that time. You can click in a blue area or a green one. If you click in a blank area, the recorder starts playback at the next available recording.



Return to the Live View [Go to live](#)

The **Go to Live** button (circled above) appears to the right of the playback controls when you are in playback mode. Click this to end the playback and return immediately to the live view.

Play/Pause

This button starts playback (or pauses it).

Jump 15 Seconds

These buttons jump the recording forward or backward roughly 15 seconds.

Play Forward/Backward

You can use the play forward button to toggle playback speed. This varies from 1x–4x over the Internet, and 1x–8x when using the local interface. The speed is shown in yellow above and to the left of the playback controls.

You can also use the play backward button to play at 1x speed in reverse (there are no other speeds available).

When the recording has been paused, you can use the play forward button to toggle from 1/2x speed down to playback by frame. The speed is displayed in the yellow text. While in playback by frame mode, click on the camera's screen to advance the video by one captured frame.

The play backward button has no special effect when the playback is paused.

Next Event / Previous Event

Clicking these buttons jumps you ahead to the start of the next recording in the timeline, or back to the start of the recording prior to the one you are watching.

Listen to the Audio

This button lets you hear the audio from that recording, if any.

- On the web interface, when the audio button is first clicked, a volume slider appears. While audio is active, hovering your mouse over the audio icon makes the volume slider reappear.
- On the local interface, this icon shows a slash through it when audio is not available through that camera, or is not turned on. It does not have a volume slider; use your speakers' volume control instead.





Change the Times Shown on the Timeline

You can vary the amount of time covered by the timeline.

Over the Internet, the timeline has six zoom levels, ranging from a half hour (measured end to end) to 24 hours.

When at the recorder, the timeline has three zoom levels, ranging from one hour (measured end to end) to 24 hours.

There are several ways to adjust the timeline:

- Click the   icons to zoom the timeline in and out.
- To the left, click the Custom button to select the zoom level of your choice.
- Click the or icons to jump directly to those zoom levels.
- When using the Internet, you click the  and  buttons at opposite ends of the timeline. These buttons shift the timeline forward or backward by half of the current span, moving the time stamp at that end of the timeline to be at the middle.

Note: The timeline does not extend back more than 48 hours; if you scroll 48 hours into the past on the timeline, no further events show.

View Events over 48 Hours Old

Use the Calendar button at the bottom right.

Within the calendar window, days may be flagged either red (indicating that an event like motion detection occurred) or blue (indicating that data was recorded by schedule, but no event was detected). Click on a day in the calendar and then click **Search** to begin playback for that day.

How to Export a Video

To make things as easy as possible, the various export functions intelligently populate the fields in the export dialogs. For example, if you are watching playback of a motion incident on camera 1, then when you click the export button, the recorder auto-fills the start and stop time of that event, as well as deselects all cameras except for camera 1. This makes exporting files quick and easy!

Export

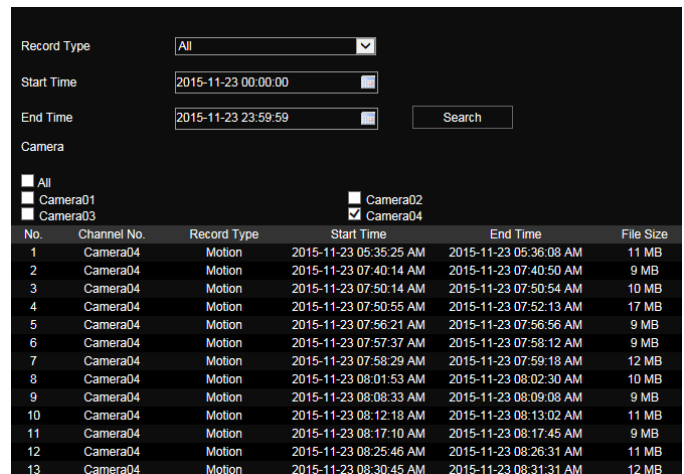
Click this icon to export your recordings. A new window pops up; its appearance depends on whether you are accessing your system through the Internet, or with an attached mouse.

Export Through the Internet

In the web interface, the file path to where the recordings are saved is shown at the top of the window. You can also change the path for this one download by clicking on the folder icon to open a standard save dialog.

Adjust the start time and end time (if desired), and then select which camera(s) you want to download.

The protocol takes all the recordings taken during that time period. It clips longer recordings at the designated start and end time. Then the system knits the recordings together into one continuous file, starting with recordings of like type (e.g., all alarm events are assembled, etc.). Then the groups of recordings are grouped together and downloaded to your computer or storage device.



No.	Channel No.	Record Type	Start Time	End Time	File Size
1	Camera04	Motion	2015-11-23 05:35:25 AM	2015-11-23 05:36:08 AM	11 MB
2	Camera04	Motion	2015-11-23 07:40:14 AM	2015-11-23 07:40:50 AM	9 MB
3	Camera04	Motion	2015-11-23 07:50:14 AM	2015-11-23 07:50:54 AM	10 MB
4	Camera04	Motion	2015-11-23 07:50:55 AM	2015-11-23 07:52:13 AM	17 MB
5	Camera04	Motion	2015-11-23 07:56:21 AM	2015-11-23 07:56:56 AM	9 MB
6	Camera04	Motion	2015-11-23 07:57:37 AM	2015-11-23 07:58:12 AM	9 MB
7	Camera04	Motion	2015-11-23 07:58:29 AM	2015-11-23 07:59:18 AM	12 MB
8	Camera04	Motion	2015-11-23 08:01:53 AM	2015-11-23 08:02:30 AM	10 MB
9	Camera04	Motion	2015-11-23 08:08:33 AM	2015-11-23 08:09:08 AM	9 MB
10	Camera04	Motion	2015-11-23 08:12:18 AM	2015-11-23 08:13:02 AM	11 MB
11	Camera04	Motion	2015-11-23 08:17:10 AM	2015-11-23 08:17:45 AM	9 MB
12	Camera04	Motion	2015-11-23 08:25:46 AM	2015-11-23 08:26:31 AM	11 MB
13	Camera04	Motion	2015-11-23 08:30:45 AM	2015-11-23 08:31:31 AM	12 MB

If the aggregate file is larger than 1 GB, the system splits it into 1 GB chunks for ease of downloading.

Viewing an Exported Video on Your Device

When exported, video footage is in standard MPEG format.

Playback on Windows Media Player (11 or lower) requires a codec, available at www.LumaSurveillance.com/support.

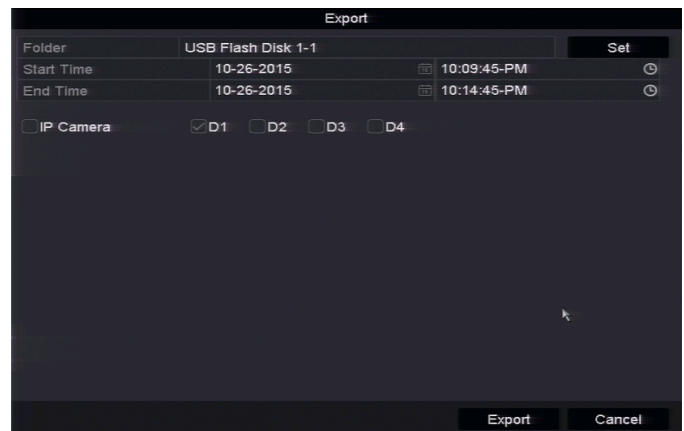
Alternatively, you can use a third-party player such as VLC.

Export at the Recorder

In the local interface, the files can only be saved to an external storage device like a USB drive. To select the file path to which the recordings will be saved, press the **Set** button. If your storage device does not appear, click **Refresh**.

Choose a start time and an end time, and then select which camera(s) you want to download.

The protocol takes all the recordings taken during that time period. It clips longer recordings at the designated start and end time. Then the system knits the recordings together into one continuous file, starting with recordings of like type (e.g., all alarm events are assembled, etc.). Then the groups of recordings are grouped together and downloaded to your computer or storage device.



If the aggregate file is larger than 1 GB, the system splits it into 1 GB chunks for ease of downloading.

Clip

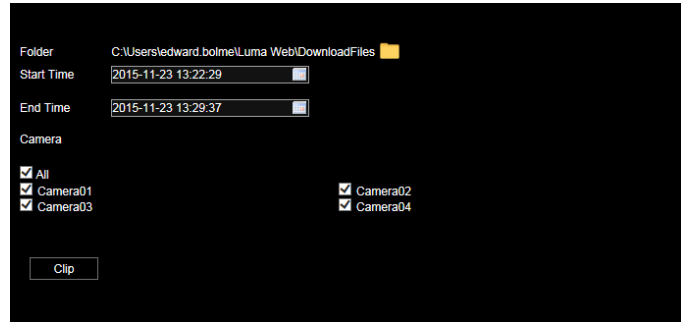
If you just want to export a segment of the recording you are currently watching, this is your best option. Export a custom recording file with just three clicks!

Click on the scissors icon. It turns blue to show you that it has been activated.

Move your mouse over the timeline. It turns into a finger, and above it the recorder shows the timestamp of the moment you're pointing to, in yellow.

Click on the start time for the recording that you want to save, then click again on the end time.

The system saves the designated recording to your hard drive (if you are connecting to your recorder over the Internet) or its internal storage (if you're using the mouse attached to the recorder).



Other Methods to Search and View Recordings

These methods provide you a detailed list to search your past recordings.

Search Anything and Everything 🔍

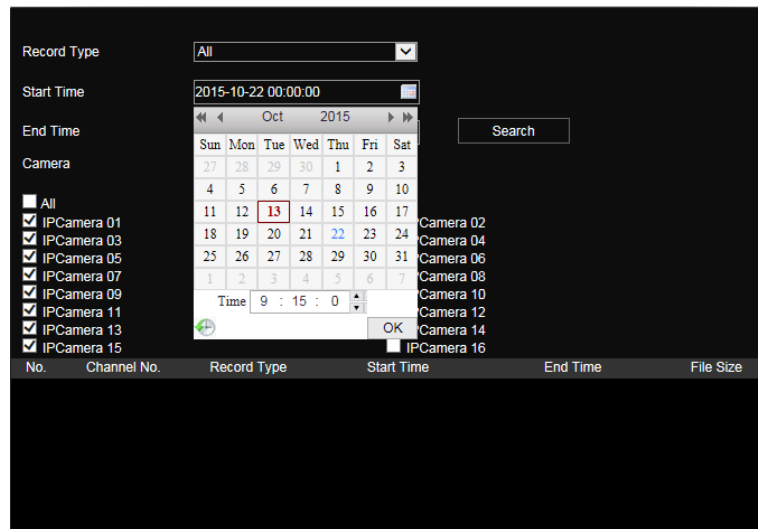
Clicking this opens the dialog shown at right.

In this dialog you define filters for the recording type, the start and end times, and which cameras you want included in the search.

Note that this tool searches only for recordings that were created as files of the type that you specify. It will not, for example, find a motion event that was detected within a continuous recording, since the file was created as a continuous recording file.

When you have defined the filters, click **Search**. The results will be shown in the window at the bottom of the dialog.

The pop-up results window lists 20 results per page. You can navigate to different pages at the bottom of the window. Double-click on any result to start playing that individual recording.



Search the Recent Timeline ☰

This button is found below the bottom right camera.

Click it to see a list of all files recorded by the active camera (the one with the white border) from the date of the timeline that you are currently viewing—whether today or several weeks ago—as well as the day previous.

The pop-up results window lists 20 results per page. You can navigate to different pages at the bottom of the window. Double-click on a file to start playing it.

