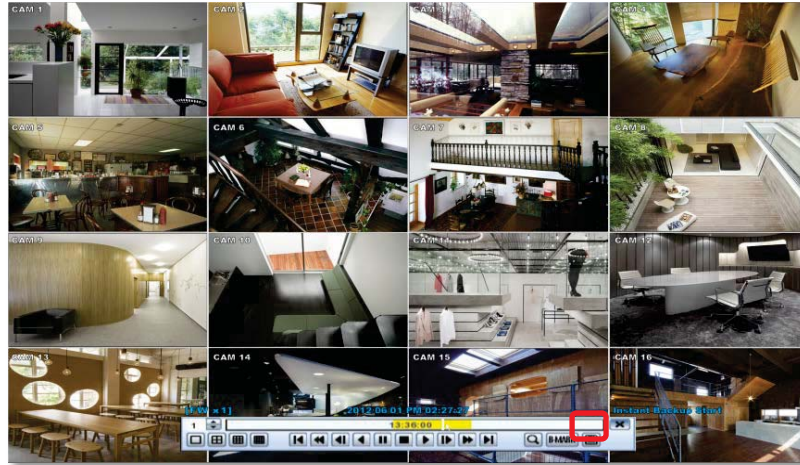


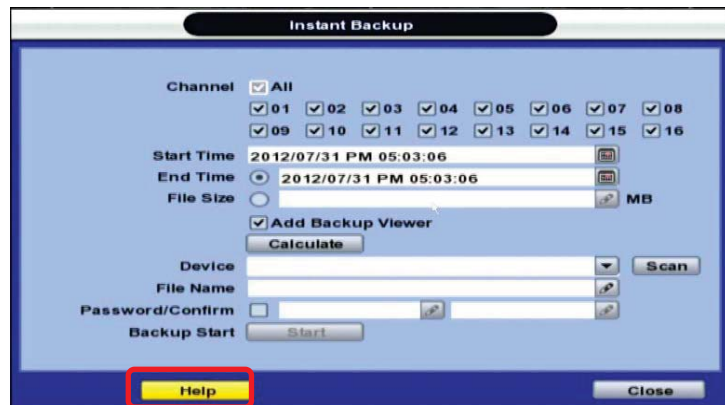
3.6 Quick Backup during Playback

User can easily archive video while viewing the video playback. See section 4.5 Backup for more information on manual backup from the setup menu.

1. In live mode, right-click anywhere on the screen and select 'Backup' to open the backup menu.
2. In playback mode, press the 'Backup' button on the popup menu bar to open the backup menu.



3. Adjust the following options:
 - a. Select the channels to be included in the backup file.
 - b. Adjust the start and end time of the backup file.
 - c. Select to include the Backup Viewer with the archived file.
 - d. Press the 'Calculate' button to see the expected size of the backup file.
 - e. Press the 'Scan' button next to the device to find the USB drive for backup.
 - f. Edit the file name and add a protection password if needed.
 - g. Press 'Start' to start the backup process. A progress bar will appear on the screen.



NOTE **Help** The "HELP" button offers interactive help, recommended settings and step-by-step instructions on how to correctly setup main functions in the DVR.

3.7 Search Recorded Video

3.7.1 Date/Time Search

To search your recorded data by date/ time, follow one of the options below:

1. Hover your mouse over the left side of the menu bar and click the quick Menu button, then select Search→ Date/ Time.
2. Right-click anywhere on the screen, select Search→ Date/ Time



The calendar window will appear. Days with recorded data will be indicated in RED.

1. Select from the calendar the date. If necessary, use the manual year and month options on the left side to adjust the calendar view.



2. The 'Intelli-Search Bar' at the bottom of the window will display hours when recorded data is available in color code. Once the recorded video data of the selected date is shown, user can adjust the vertical search line to the time that user wants to search by dragging a mouse. As the vertical line is moving back and forth, user can see "the Search time" clock is also changing. When user decides the Search time, click Play to see the selected video data

3. The recording mode will be distinguished in the time bar according to color:

Color	Recording Mode
No Color	Camera has no recorded data for the selected time.
Red	Panic recording triggered by the user.
Yellow	Continuous recording.
Green	The system records only when motion is detected
Blue	"Continuous" + "Motion"-The system records continuously and will switch to motion recording configuration if motion is detected. The system will also send a "motion event" message to the Pivot Client Software. If "MOTION ALARM" is disabled in the "DEVICE" menu, and recording is set to "CONT + MOT", the system will record with continuous recording even when motion is detected in motion area.

Orange	The system records when a sensor is triggered and only during the dwell time as set in "SENSOR" of the "DEVICE" menu. If "SENSOR" is disabled under the "DEVICE" menu, and recording schedule is set to "SENSOR", the system will not record even though a sensor is triggered.
Brown	"Continuous" + "Sensor"- The system records continuously and will switch sensor recording if a sensor is triggered during dwell time. The system will also send a "sensor event" message to the Pivot Client Software over the network. If "SENSOR" is disabled in the "DEVICE" menu, and recording mode is set to "CONT + SENS", the system will record with continuous recording even when a sensor is triggered.



CAUTION Dark Blue Color

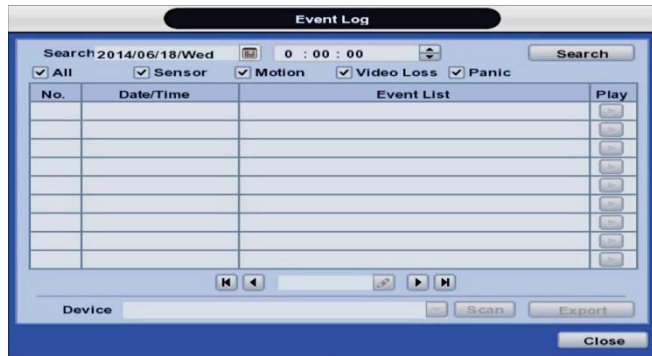
The data recorded during DST (Daylight Saving Time) will be indicated in Dark Blue color in the Intelli-Search Bar on playback mode.

4. To view video from the selected time, follow one of the options below:
 - a. Use the manual hour option to view specific hours of the day.
 - b. Using the table, click on the hour you would like to view in playback.
5. Press the 'Play' button at the bottom of the window. The system will display all channels in playback mode, corresponding to the selected date and time.

3.7.2 Event Log

The Event log search allows you to search for a particular event, displaying the search results in a detailed table.

1. To open Event Log Search, select one of the following options:
 - a. Click the  button in the quick menu and select Search→ Event Log.
 - b. Right-click anywhere on the screen and select Search→ Event Log.
2. Select the date you would like to search.
3. Select which events to include in the report. Select from Sensor, Motion, Video Loss, Panic Recording, HDD Full, or All
4. Press 'Search'. The system will display all search results in the table, starting with the latest events.
5. Use the buttons on the bottom of the window to switch between the report's pages.
6. Export the log report to a USB memory device in text file format.
 - a. Attach a USB memory stick to the USB port.
 - b. Press "SCAN" to detect the USB stick.
 - c. Press "EXPORT" to copy the log information to the media.
7. Click  play icon to play back the selected event data.



NOTE If an alarm or event does not appear in the event log, check the alarm settings, and connection port at the DVR's back panel..